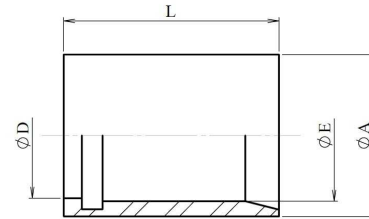
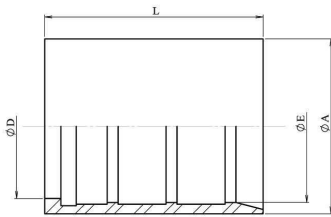


## Ferrules for convoluted PTFE, smooth profile

Stainless Steel AISI 316-L

1/1



1"



1/4" --- 3/4"

Part n°	DN	L	ØA	ØD	ØE
<b>880410400</b>	1/4"	30	16	11,2	12,7
<b>880410600</b>	3/8"	30	22	16	18
<b>880410800</b>	1/2"	32	25	18,6	21
<b>880411000</b>	5/8"	36	29	22	24,7
<b>880411200</b>	3/4"	40	32	27	28
<b>880411600</b>	1"	50	40	33,7	35