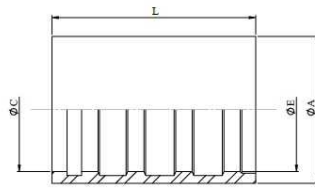
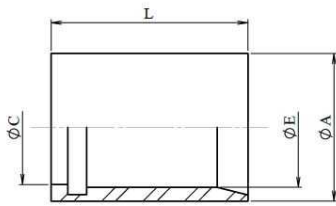


**Ferrules for smooth PTFE, smooth profile**

Stainless Steel AISI 316-L

**1/4"--- 5/8"****3/4"---1"**

Part n°	DN	L	ØA	ØC	ØE
<b>880400400</b>	1/4"	30	15	10,7	11
<b>880400500</b>	5/16"	30	17	12,8	13,2
<b>880400600</b>	3/8"	30	18	14	14
<b>880400800</b>	1/2"	32	24	18,6	19,5
<b>880401000</b>	5/8"	30	28	21,5	22,5
<b>880401200</b>	3/4"	40	30	24,4	25,5