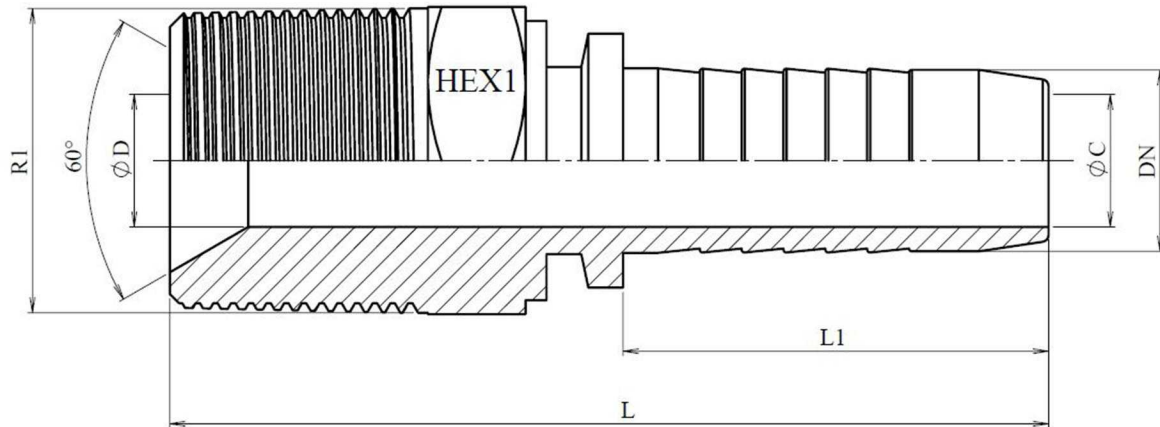
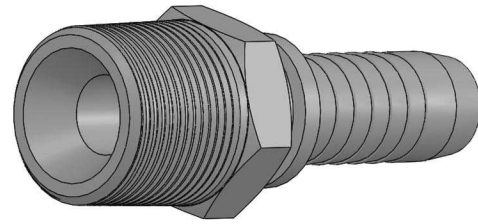


**Male BSPT tapered**

Stainless Steel AISI 316-L



Part n°	DN	R1	L	L1	HEX 1	ØC	ØD
<b>841140404</b>	1/4"	1/4" BSPT	53,5	28	17	4	4
<b>841140405</b>	5/16"	1/4" BSPT	53,8	28	17	5,5	4
<b>841140406</b>	3/8"	1/4" BSPT	55,5	29,5	17	7	4
<b>841140604</b>	1/4"	3/8" BSPT	55	28	19	4	7
<b>841140605</b>	5/16"	3/8" BSPT	55,3	28	19	5,5	7
<b>841140606</b>	3/8"	3/8" BSPT	57	29,5	19	7	7
<b>841140608</b>	1/2"	3/8" BSPT	58,5	30,5	19	9,5	7
<b>841140806</b>	3/8"	1/2" BSPT	61,5	29,5	22	7	12
<b>841140808</b>	1/2"	1/2" BSPT	63	30,5	22	9,5	9,5
<b>841140810</b>	5/8"	1/2" BSPT	66,8	34	22	12	12
<b>841140812</b>	3/4"	1/2" BSPT	73,0	39	27	15	11
<b>841141208</b>	1/2"	3/4" BSPT	68,5	30,5	30	9,5	15
<b>841141210</b>	5/8"	3/4" BSPT	72,3	34	30	12	15
<b>841141212</b>	3/4"	3/4" BSPT	77,5	39	30	15	15
<b>841141612</b>	3/4"	1" BSPT	81	39	36	15	15
<b>841141616</b>	1"	1" BSPT	89	47	36	19	15
<b>841142016</b>	1"	1"1/4 BSPT	92,5	47	46	19	26
<b>841142020</b>	1"1/4	1"1/4 BSPT	101,5	54,5	46	26	26
<b>841142420</b>	1"1/4	1"1/2 BSPT	104,5	54,5	50	26	32
<b>841142424</b>	1"1/2	1"1/2 BSPT	108	58	50	32	32
<b>841143232</b>	2"	2" BSPT	126	72	65	44	44