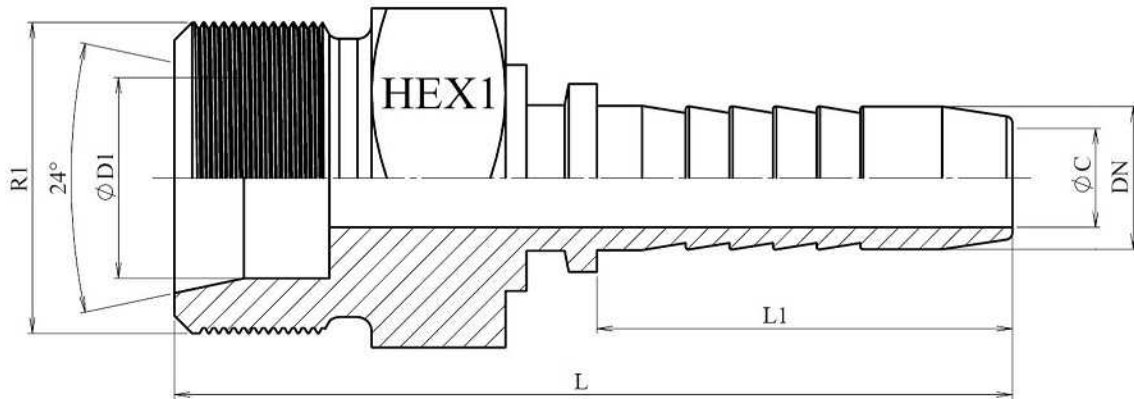
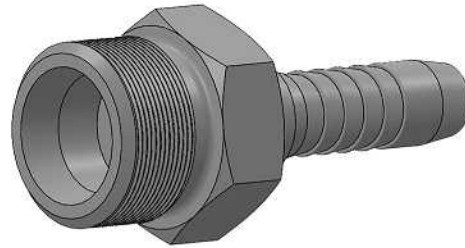


Metric Male stud 24° cone

Stainless Steel AISI 316-L

1/2

Part nº	DN	ØD1	Serie	R1	L	L1	HEX 1	ØC
84203120604	1/4"	6	L	M12x1.5	47,5	28	14	4
84203140804	1/4"	8	L	M14x1.5	49	28	17	4
84203161004	1/4"	10	L	M16x1.5	52	28	17	4
84203161005	5/16"	10	L	M16x1.5	52,3	28	17	5,5
84203161006	3/8"	10	L	M16x1.5	54	29,5	17	7
84203181204	1/4"	12	L	M18x1.5	51	28	19	4
84203181205	5/16"	12	L	M18x1.5	51,3	28	19	5,5
84203181206	3/8"	12	L	M18x1.5	55	29,5	19	7
84203221506	3/8"	15	L	M22x1.5	54	29,5	24	7
84203221508	1/2"	15	L	M22x1.5	55,5	30,5	24	9,5
84203261806	3/8"	18	L	M26x1.5	56	29,5	27	7
84203261808	1/2"	18	L	M26x1.5	57,5	30,5	27	9,5
84203261810	5/8"	18	L	M26x1.5	61,3	34	27	12
84203302212	3/4"	22	L	M30x2	69	39	32	15
84203362816	1"	28	L	M36x2	78	47	41	19
84203453520	1"1/4	35	L	M45x2	91	54,5	46	26
84203524224	1"1/2	42	L	M52x2	95,5	58	55	32
84203140604	1/4"	6	S	M14x1.5	51	28	14	4
84203160804	1/4"	8	S	M16x1.5	53	28	17	4
84203181004	1/4"	10	S	M18x1.5	54	28	19	4
84203181005	5/16"	10	S	M18x1.5	54,3	28	19	5,5
84203181006	3/8"	10	S	M18x1.5	56	29,5	17	7
84203201205	5/16"	12	S	M20x1.5	56,3	28	22	5,5
84203201206	3/8"	12	S	M20x1.5	58	29,5	22	7
84203221406	3/8"	14	S	M22x1.5	59,5	29,5	24	7
84203221408	1/2"	14	S	M22x1.5	61	30,5	24	9,5
84203241608	1/2"	16	S	M24x1.5	61,5	30,5	27	9,5

Standard series

Metric fittings

Metric Male stud 24° cone



Stainless Steel AISI 316-L

2/2

Part n°	DN	ØD1	Serie	R1	L	L1	HEX 1	ØC
84203302010	5/8"	20	S	M30x2	69,3	34	32	12
84203302012	3/4"	20	S	M30x2	75,5	39	32	15
84203362512	3/4"	25	S	M36x2	79	39	41	15
84203362516	1"	25	S	M36x2	87	47	41	19
84203423016	1"	30	S	M42x2	90	47	46	19
84203523820	1"1/4	38	S	M52x2	101	54,5	55	26