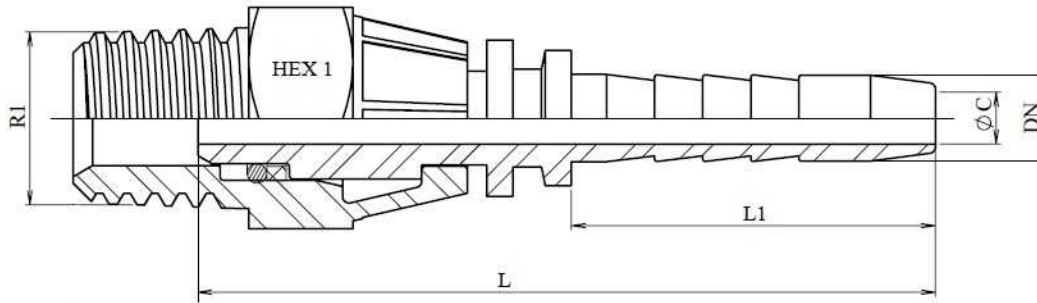
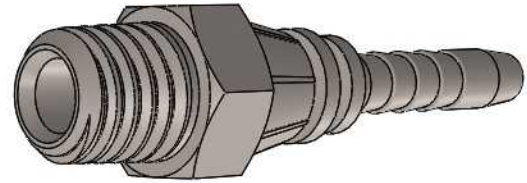


Standard series
 NPT-NPSM Fittings
Swivel male NPT

Stainless Steel AISI 316-L



Part n°	DN	R1	L	L1	HEX 1	ØC
841650404	1/4"	1/4" NPT	56.7	28	17	4
841650606	3/8"	3/8" NPT	68	29,5	19	7
841650806	3/8"	1/2" NPT	62.5	29,5	22	7
841650808	1/2"	1/2" NPT	79,5	30,5	22	9,5
841650812	3/4"	1/2" NPT	76.5	30,5	22	9,5
841651208	1/2"	3/4" NPT	76.5	30,5	32	15
841651212	3/4"	3/4" NPT	98,5	39	32	19
841651612	3/4"	1" NPT	102,5	39	38	26
841651616	1"	1" NPT	111	47	38	32