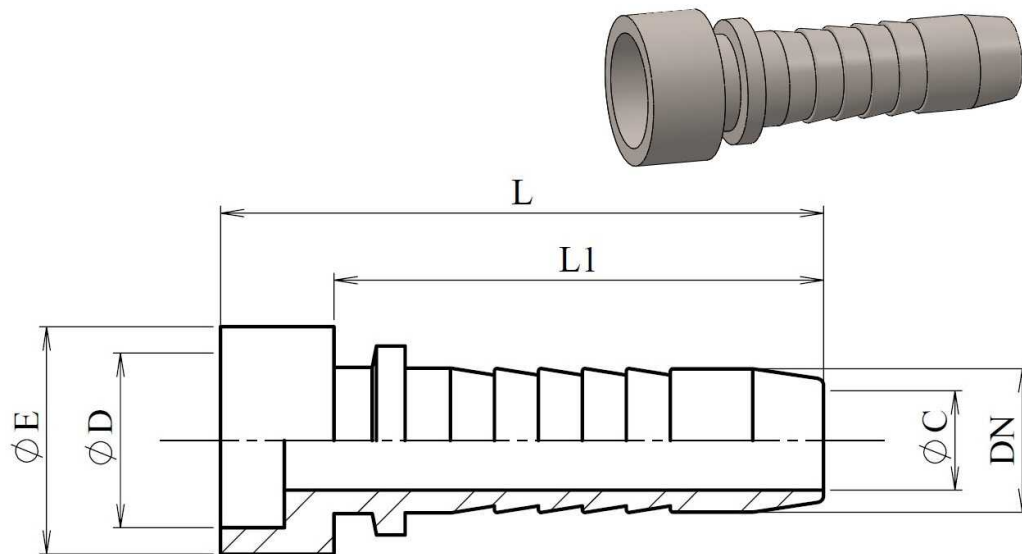


**Welding standpipes**

Stainless Steel AISI 316-L



Part n°	DN	L	L1	ØC	ØD	ØE
<b>84000200</b>	1/8"	33	22	2	6,2	10
<b>84000300</b>	3/16"	34	24	3	8,2	11
<b>84000400</b>	1/4"	38,5	28	4	8,2	13
<b>84000500</b>	5/16"	41	28	5,5	12,3	16
<b>84000600</b>	3/8"	42,5	29,5	7	12,3	16
<b>84000800</b>	1/2"	43	29,5	9,5	14,3	20
<b>84001000</b>	5/8"	49,8	34	12	18,3	23
<b>84001200</b>	3/4"	54,5	39	15	20,3	26
<b>84001600</b>	1"	64	54	19	25,3	32
<b>84002000</b>	1"1/4	78	54,5	26	30,4	40
<b>84002400</b>	1"1/2	81,5	58	32	34,5	46
<b>84003200</b>	2"	92	72	44	48	60
<b>84004000</b>	2"1/2	118	80	57	69	