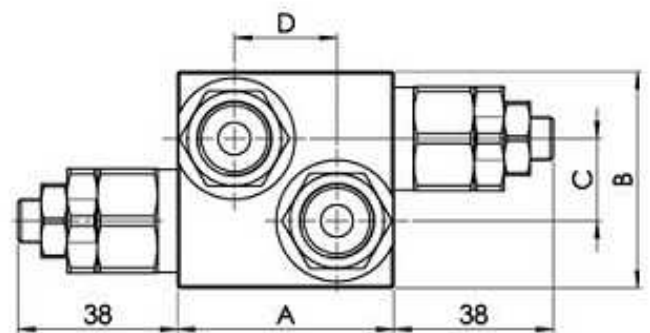
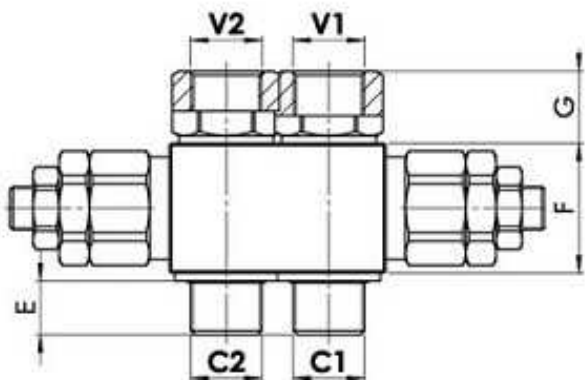
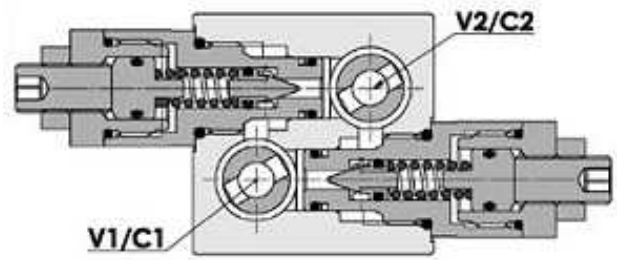
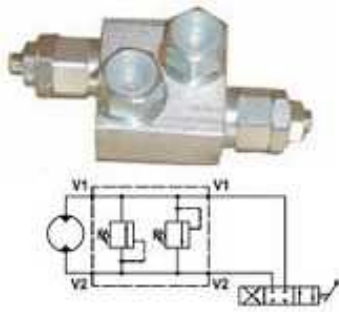


## Pressure relief valve over motor MOMM type



**Materials:** cartridge in steel zinc plated, internal parts are in hardened steel. Body is in high strength aluminium alloy.

**Rated flow:** 15 l/min

**Max. setting:** 350 bar

**Adjustment means:** leakproof screw

Part nº	R1	Max. flow (l/min)	Max. Press. (bar)	Setting (bar)	Reg. rate (bar)	Press. increase (bar/turn)
<b>FPMD15DVD13/805P</b>	3/8" BSP	15	250	5	5-60	15
<b>VSMD15DVD13/805P</b>	3/8" BSP	15	250	5	5-60	15
<b>FPMD15DVD13/810P</b>	3/8" BSP	15	250	20	20-130	30
<b>VSMD15DVD13/810P</b>	3/8" BSP	15	250	20	20-130	30
<b>VSMD15DVD13/820P</b>	3/8" BSP	15	250	40	40-240	65
<b>FPMD15DVD13/835P</b>	3/8" BSP	15	250	50	50-350	100
<b>VSMD15DVD13/835P</b>	3/8" BSP	15	250	50	50-350	100