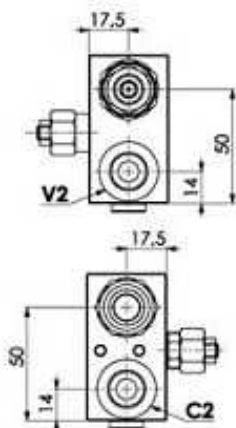
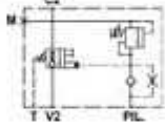
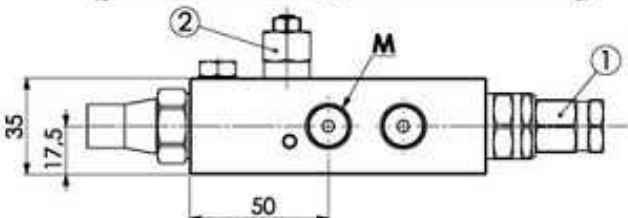
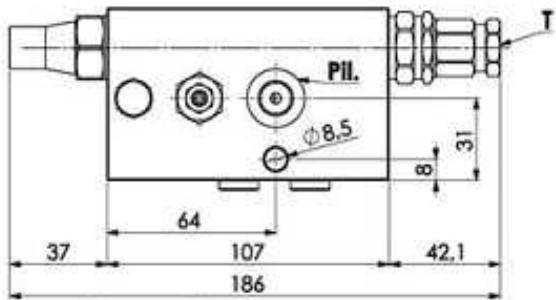
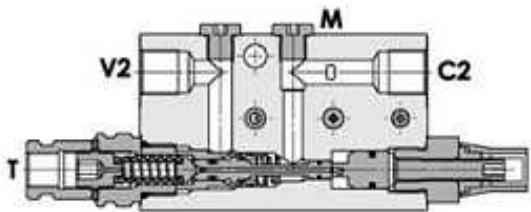


Flow check and metering excavator valve, 3/8, right

1/1



V2/C2=3/8"BSPP
M/PIL.=1/4"BSPP



Spring valve 1 Adjustable pressure range (bar): 4-15,5
Pressure increase (bar/turn): 4
Standard setting (bar): 7,5

Spring valve 2 Adjustable pressure range (bar): 250-500
Pressure increase (bar/turn): 198
Standard setting (bar): 350

Materials: Body is in steel zinc plated. Internal parts are in hardened steel.

Adjustment means: leakproof screw adjustment

Part n°	R1	Max. flow (l/min)	Max. Press. (bar)	Version
VSEXC35S3/8LDX0550	3/8" BSP	35	420	Derecha

R1=V2, C2