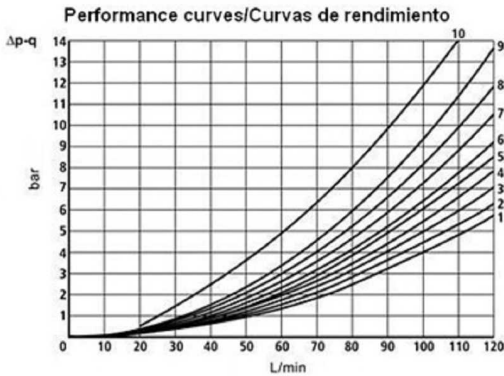
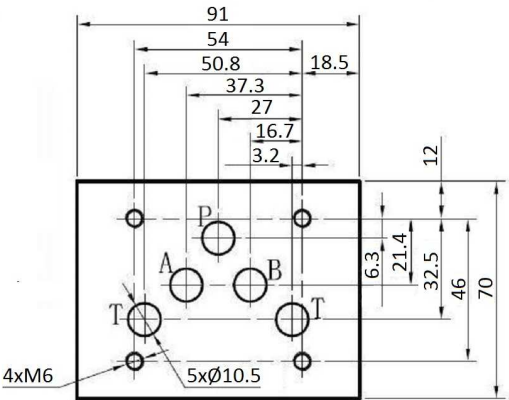
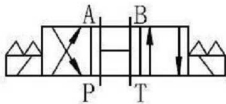


Solenoid valves
NG10 Solenoid valve
NG10 Solenoid valve - spool no.3



Spool / Corredera	Flow path / Trayectoria flujo			
	P-A	P-B	A-T	B-T
1	1	1	4	4
2	3	3	6	7
3	1	1	6	7
6	1	1	3	3
3A	-	1	6	-
41A	3	3	-	-
51A	3	3	4	5

- Electric Connectors** with LED
- 4 Screw Set Included** M6 x 40
- Operating Pressure** · A, B, P: 315 bar
· T: 160 bar
- Cast iron body**

Part nº	Size	Voltage (V)	Max. flow (l/min)	Max. Press. (bar)	f (Hz)	Ø nucleus
KVNG10-3-12CC H	NG-10	12 VDC	100	315		31,4
KVNG10-3-24CC H	NG-10	24 VDC	100	315		31
KVNG10-3-110CA H	NG-10	110 VAC	100	315	50	31,4
KVNG10-3-220CA H	NG-10	220 VAC	100	315	50	31

Solenoid valves

NG10 Solenoid valve

NG10 Solenoid valve - spool no.3

Page: 2/2

Part n°	Size	Voltage (V)	Max. flow (l/min)	Max. Press. (bar)	f (Hz)	Ø nucleus
---------	------	-------------	----------------------	----------------------	--------	-----------

*** Review attached PDF***