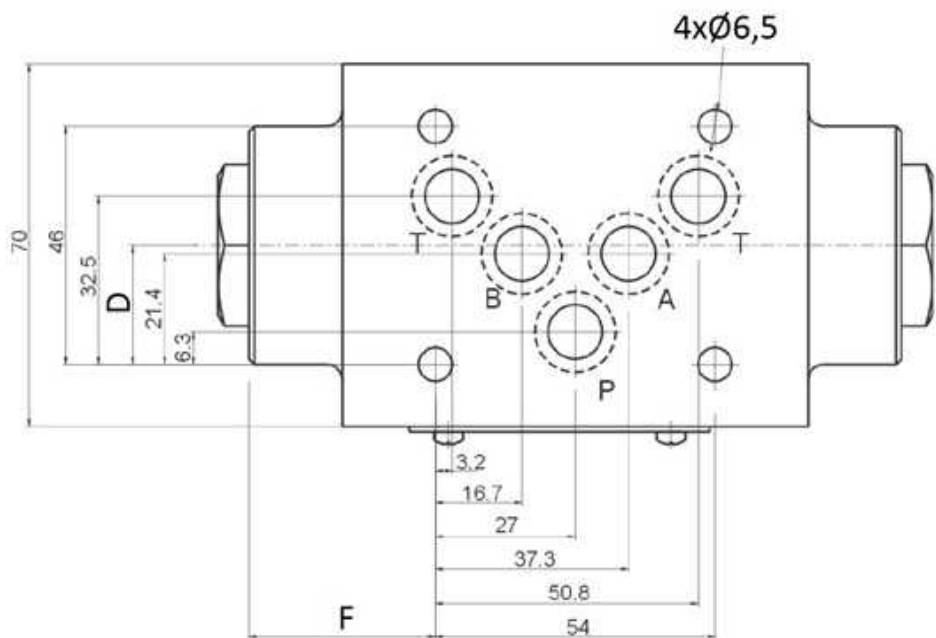
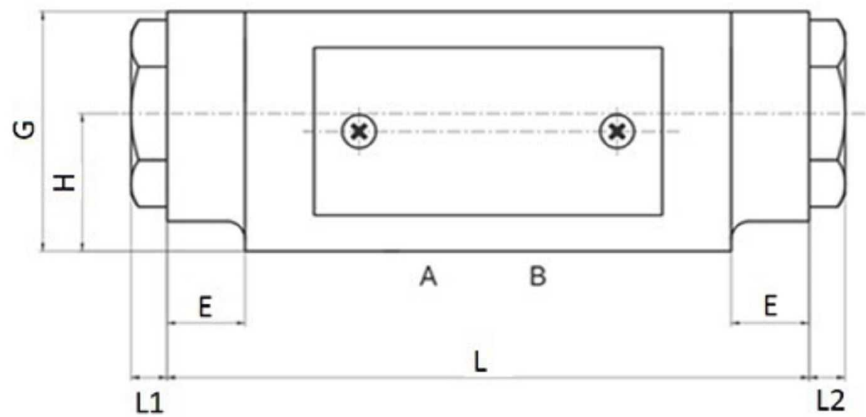
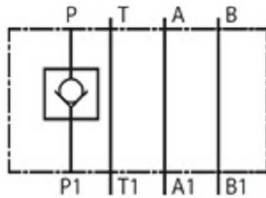


Solenoid valves

Modular blocks for NG10

NG10 Check valve in P

Page: 1/2



Cast iron body

Spring opening: 0,5 Bar

Solenoid valves

Modular blocks for NG10

NG10 Check valve in P

Page: 2/2

Part n°	Size	Max. flow (l/min)	Max. Press. (bar)	L	L2	D	E	F	G	H
AKV-10-P H	NG-10	100	315	80	6	15,8	-	16	55	27,5