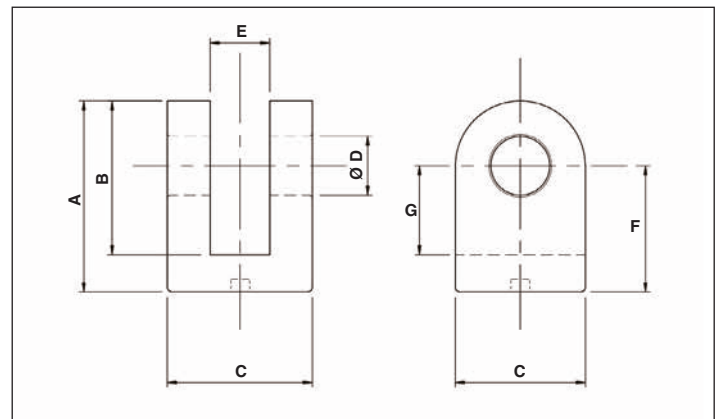
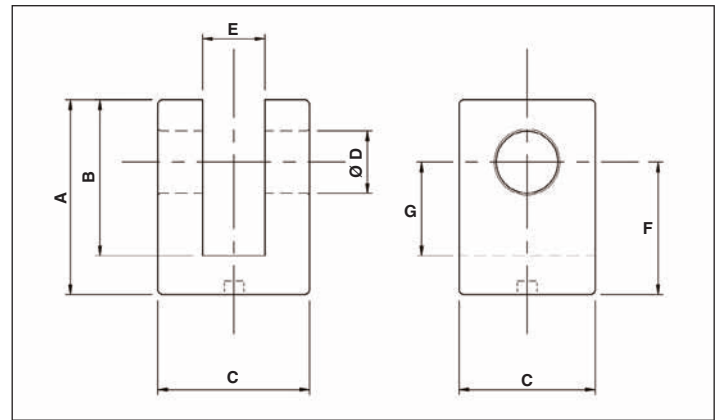
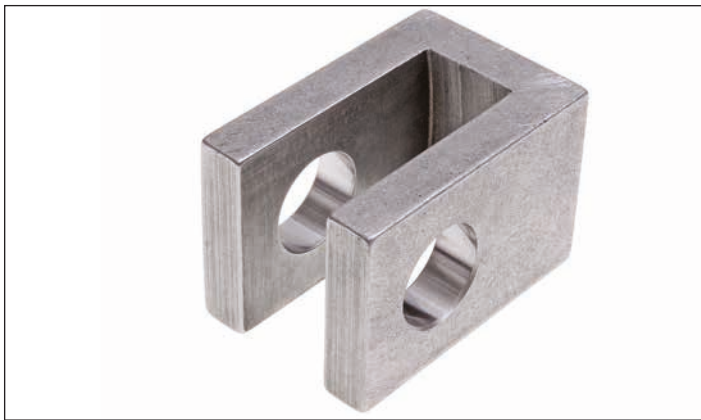


## WELDABLE FORKS



|            |                    |                       |               |               |
|------------|--------------------|-----------------------|---------------|---------------|
| FORK<br>FK | PIN SIZE Ø D<br>16 | CENTRE HEIGHT F<br>34 | WELDABLE<br>W | RADIUS<br>RAD |
|------------|--------------------|-----------------------|---------------|---------------|

| PART NUMBER  | A   | B   | C   | Ø D   | E  | F   | G  | DOWEL SIZE | RADIUS |
|--------------|-----|-----|-----|-------|----|-----|----|------------|--------|
| FK1634W      | 50  | 40  | 35  | 16.20 | 16 | 34  | 24 | 4.25 x 6   | 0      |
| FK1636W-RAD* | 56  | 46  | 40  | 16.25 | 20 | 36  | 26 | 4.25 x 4   | 20     |
| FK2040W      | 60  | 50  | 40  | 20.25 | 20 | 40  | 30 | 4.25 x 4   | 0      |
| FK2040W-RAD* | 60  | 50  | 40  | 20.25 | 20 | 40  | 30 | 4.25 x 4   | 20     |
| FK2545W      | 65  | 50  | 50  | 25.25 | 25 | 45  | 30 | CD         | 0      |
| FK2550W-RAD* | 75  | 60  | 50  | 25.25 | 25 | 50  | 35 | 4.25 x 4   | 25     |
| FK3050W      | 75  | 60  | 60  | 30.25 | 30 | 50  | 35 | CD         | 0      |
| FK3050W-RAD  | 80  | 65  | 60  | 30.25 | 30 | 50  | 35 | 4.25 x 8   | 30     |
| FK3055W-RAD* | 85  | 70  | 60  | 30.25 | 30 | 55  | 40 | 4.25 x 8   | 30     |
| FK3555W      | 85  | 70  | 70  | 35.25 | 35 | 55  | 40 | CD         | 0      |
| FK3555W-RAD  | 90  | 75  | 70  | 35.25 | 35 | 55  | 40 | 4.25 x 8   | 35     |
| FK4050W-RAD  | 90  | 78  | 70  | 40.10 | 45 | 50  | 38 | 8.25 x 8   | 40     |
| FK4070W-RAD  | 110 | 90  | 80  | 40.25 | 40 | 70  | 50 | 4.25 x 10  | 40     |
| FK5095W-RAD  | 145 | 110 | 100 | 50.50 | 50 | 95  | 60 | 6.25 x 12  | 50     |
| FK60105W-RAD | 160 | 120 | 110 | 60.50 | 60 | 105 | 65 | 6.25 x 12  | 55     |

MATERIAL : STEEL S235JR - S355JR OR EQUIVALENT  
 CD : CENTRE DRILLED  
 \* : DENOTES OUR OTS BEARINGS WILL CLEAR