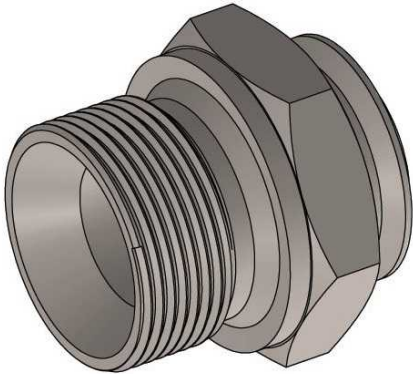
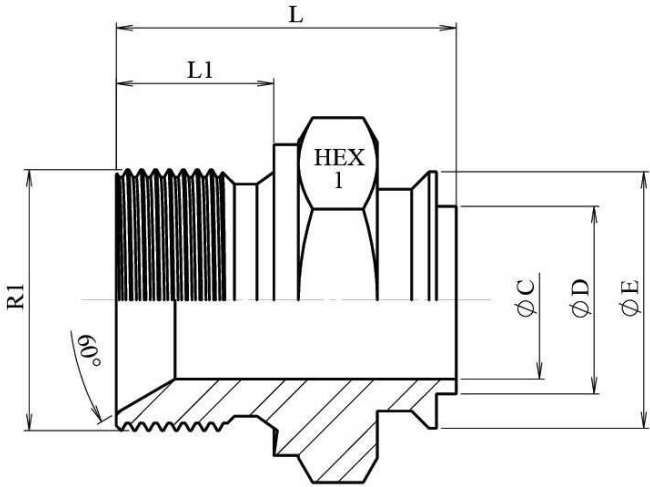


Welding BSP 60° Male with guide

Stainless Steel AISI 316-L



Part nº	DN	R1	L	L1	HEX 1	ØC	ØD	ØE
Z103504	1/4"	1/4" BSP	27,5	11	17	5	5,8	12
Z103506	3/8"	3/8" BSP	29	12	22	8	9,8	16
Z103508	1/2"	1/2" BSP	32,5	15	27	10	12	20
Z103512	3/4"	3/4" BSP	33.5	16	32	15	19	25
Z103516	1"	1" BSP	40,5	19	41	22	24,5	32
Z103520	1"1/4	1"1/4 BSP	44	20	50	30	31	41
Z103524	1"1/2	1"1/2 BSP	46	22	55	32	39	46
Z103532	2"	2" BSP	51,5	25	65	45	50	60