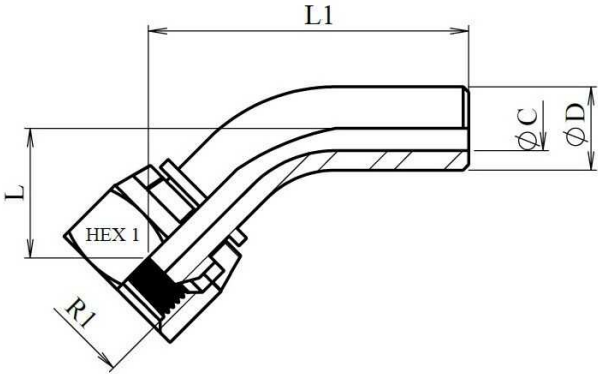


Welding BSP 60° swept 45°

Stainless Steel AISI 316-L

1/1



Part nº	DN	R1	L	L1	HEX 1	ØC	ØD
Z103804	1/4"	1/4" BSP	15	34,5	19	4	8
Z103806	3/8"	3/8" BSP	19	45	22	7	12
Z103808	1/2"	1/2" BSP	23	58	27	9,5	14
Z103812	3/4"	3/4" BSP	30	73	32	15	20
Z103816	1"	1" BSP	36	95,5	41	19	25
Z103820	1"1/4	1"1/4 BSP	43	108	50	26	30
Z103824	1"1/2	1"1/2 BSP	45,5	128	55	33	38
Z103832	2"	2" BSP	41	70,58	70	46	48,3