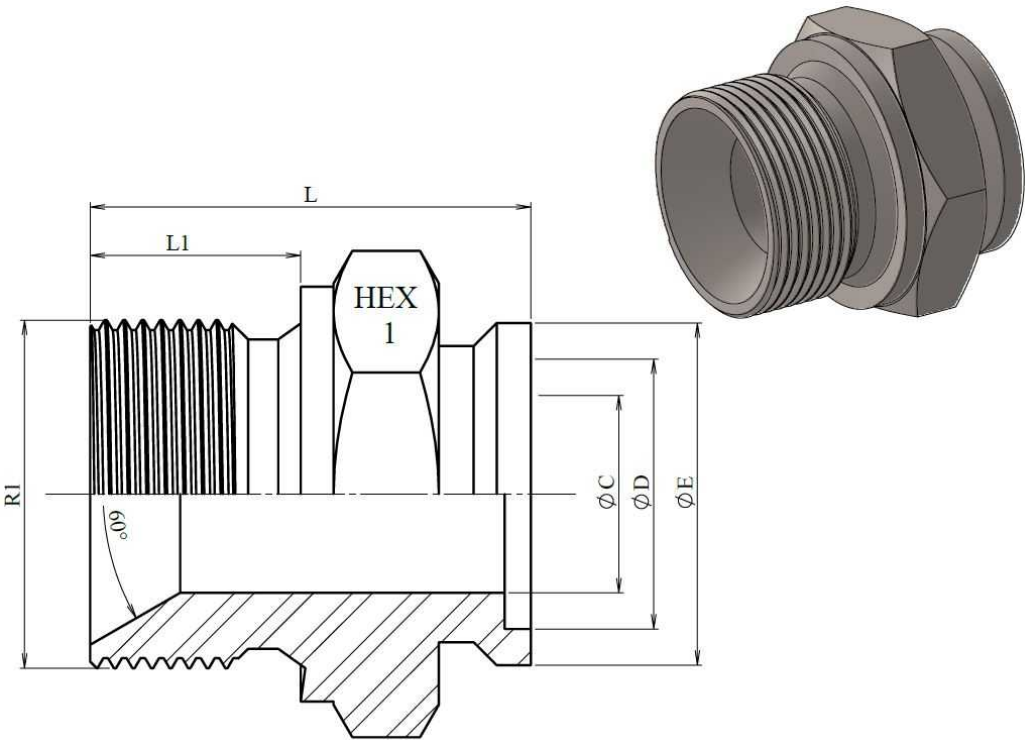


Inside welding BSP Male

Stainless Steel AISI 316-L

1/1



Part nº	DN	R1	L	L1	HEX 1	ØC	ØD	ØE
<b>Z1035104</b>	1/4"	1/4" BSP	24,5	11	19	6	8,2	12
<b>Z1035106</b>	3/8"	3/8" BSP	26	12	22	8	12,3	16
<b>Z1035108</b>	1/2"	1/2" BSP	28,5	14	27	11	14,3	21
<b>Z1035112</b>	3/4"	3/4" BSP	33,5	16	32	15	20,5	26
<b>Z1035116</b>	1"	1" BSP	37,5	19	41	22	25,3	32
<b>Z1035120</b>	1"1/4	1"1/4 BSP	44	20	50	26	30,3	40
<b>Z1035124</b>	1"1/2	1"1/2 BSP	44	22	55	32	38,3	46
<b>Z1035132</b>	2"	2" BSP	52	25	65	46	50,3	60,2