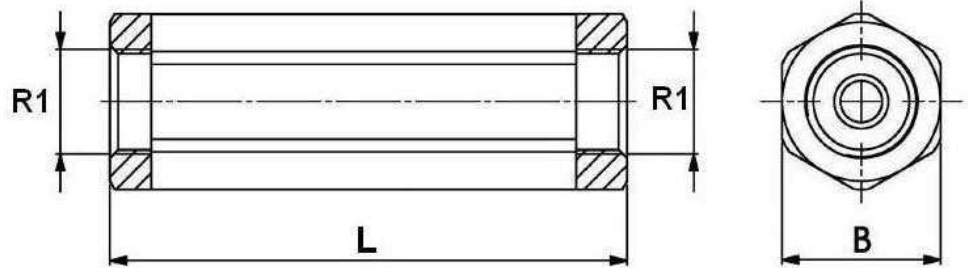
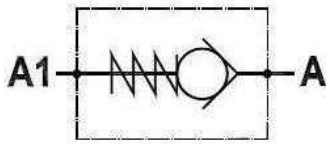
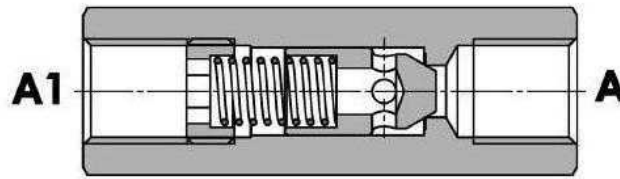


Check-valve line mounting

1/2



Material Body in steel

Part n°	R1	Max. flow (l/min)	Max. Press. (bar)	Setting (bar)	L	B
VSR 1/4	1/4" BSP	12	350	0.5	62	19
VSR 1/4 2.5	1/4" BSP	12	350	2.5	62	19
VSR 1/4-5	1/4" BSP	12	350	5	62	19
VSR 1/4-10	1/4" BSP	12	350	10	62	19
VSR 3/8	3/8" BSP	30	350	0.5	68	24
VSR 3/8 2.5	3/8" BSP	30	350	2.5	68	24
VSR 3/8-5	3/8" BSP	30	350	5	68	24
VSR 3/8-10	3/8" BSP	30	350	10	68	24
FPR 1/2	1/2" BSP	45	320	0.5	78	27
VSR 1/2	1/2" BSP	45	320	0.5	78	27
VSR 1/2 2.5	1/2" BSP	45	320	2.5	78	27
VSR 1/2-5	1/2" BSP	45	320	5	78	27
VSR 1/2-10	1/2" BSP	45	320	10	78	27
VSR 3/4	3/4" BSP	85	300	0.5	88	36
VSR 3/4 2.5	3/4" BSP	85	300	2.5	88	36
VSR 3/4-5	3/4" BSP	85	300	5	88	36
VSR 3/4-10	3/4" BSP	85	300	10	88	36
VSR 1	1" BSP	140	250	0.5	112	46
VSR 1 2.5	1" BSP	140	250	2.5	112	46
VSR 1-5	1" BSP	140	250	5	112	46
VSR 1-10	1" BSP	140	250	10	112	46
VSR 1 1/4	1"1/4 BSP	200	250	0.5	145	55
VSR 1 1/4 2.5	1"1/4 BSP	200	250	2.5	145	55
VSR 1 1/4-5	1"1/4 BSP	200	250	5	145	55

Check-valve line mounting**2/2**

Part n°	R1	Max. flow (l/min)	Max. Press. (bar)	Setting (bar)	L	B
VSR 1 1/4-10	1"1/4 BSP	200	250	10	145	55
VSR 1 1/2	1"1/2 BSP	310	210	0.5	155	60
VSR 1 1/2 2.5	1"1/2 BSP	310	210	2.5	155	60
VSR 1 1/2-5	1"1/2 BSP	310	210	5	155	60
FPR 1 1/2-10	1"1/2 BSP	310	210	10	155	60
VSR 1 1/2-10	1"1/2 BSP	310	210	10	155	60