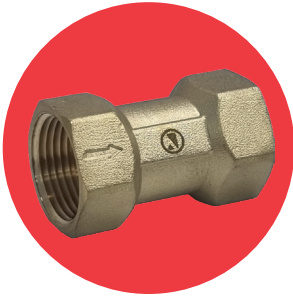


ART 38

DZR Brass Single Check Valve



Features

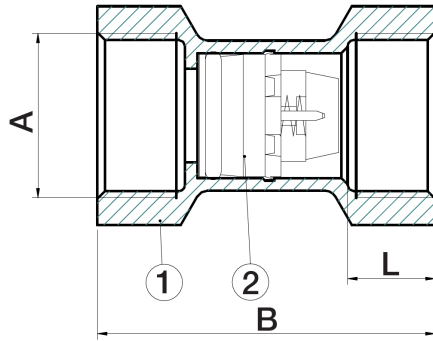
- Screwed F/F BSP Parallel (ISO 228/1) ends
- Conforms with BS EN 13959
- Prevention of back flow and back syphonage contamination
- Suitable for Fluid Categories 1 & 2



Technical data

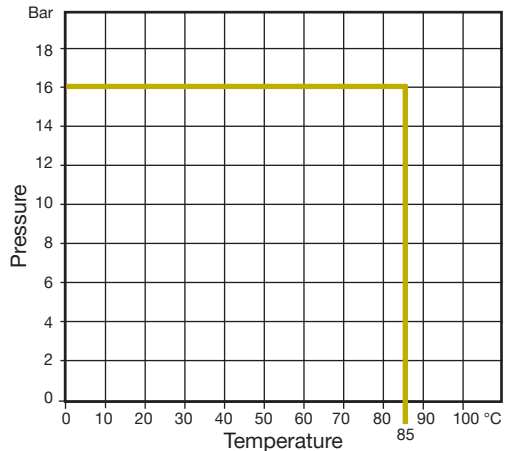
Max pressure: 16 Bar

Max Working temp: 85°C



DN	1/2"	3/4"	1"	1 1/4"	1 1/2"	2"
B	46.0	54.0	63.5	75.5	82.5	105.5
L	13.5	14.0	16.0	18.5	18.5	23.0
Kgs	0.08	0.12	0.20	0.33	0.43	0.83

N.	Part Name	Materials
1	Body	DZR Brass CW602N
2	Non-Return Core	POM



V2. Dimensions in mm

This data sheet is designed as a guide and should not be regarded as wholly accurate in every detail. We reserve the right to amend the specification of any product without notice.